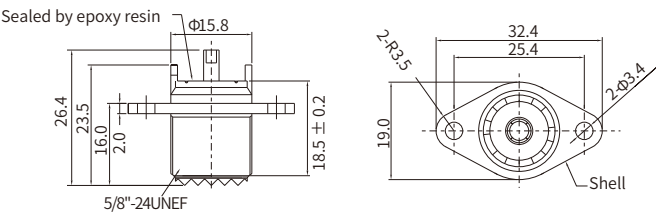


Waterproof UHF Connector

Female



RoHS

Specifications

Contacts	UHF
Pin layout(Female)	
Ambient temperature	-30°C ~ +85°C
Connector insert	PTFE
Connector contacts	Brass with nickel plated
Coupling nut/screw	PA+GF
Seal	Epoxy resin
Insulation resistance	≥10MΩ
Contact resistance	≤5mΩ
Shielding	Available
IP rating	IP67 In locked condition
Rated current	1A
Rated voltage	250V AC/DC

Part Number

Pins	Female
/	UHF

Industrial I/O connectors

Data I/O